



Contract Order & Forecast Import Tool

Bring Automation to Your Customers
Ever-changing Orders/Forecasts

 **SYNERGY** | ERP EXTENSIONS

Eliminate or Reduce Data Entry from Customer Changes

Product Features & Benefits:

- Easily manage many customer orders with a few clicks of the mouse
- Stop manually updating 100's of orders and automate the process using a spreadsheet you can download from your customer's portal
- You define mapping, allowing different customer's formats to be used
- Use the review screen to see the changes before actually importing the file
- Easily take planned orders from the import file and create part forecasts
- Works right into your current contract review process

Use Case Statements:

- Does your customer allow you to download their current demand signals from a portal? The signals may include order changes or forecasts that require hours of data entry. Save time, and reduce data entry errors, by letting SR Import Order Changes & Forecasts tool do all the heavy lifting.

How many mistakes are made by entering data manually?

Have you ever had any of these issues due to that?

- Miss a shipment
- Ship wrong quantity
- Ship wrong part
- Have to expedite to get it done
- Make supply for an order that was pushed out and not due for weeks/months?

The Solution is Available...

Eliminate or Reduce Data Entry from Customer Changes

- Pull Ins
- Push Outs
- Quantity Changes
- Date Changes
- Forecasts

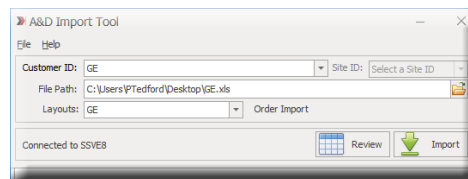
Planning and Scheduling occurs with current data

- MRP and Scheduling can run with current demand, instead of yesterday's or even older
- Ability to react faster and discuss any issues with your customer
- When new prospects see how fast you can respond to changes, this tool could win you more business
- The tool allows you to react and plan faster and deliver *what* you want, *when* you want

Call today to schedule a free web presentation:
 1-866-896-6347 or
 Email: CustomerCare@SynergyResources.net

Import Features

- Layout Designer
 - Can support any customer, any row based spreadsheet format
 - Don't need to get custom programming, lower TCO
 - You are in control
- Review
 - What has changed with color codes for rapid review
 - See Pull Ins, Push Outs, Quantity Changes, missing data quickly
 - Export to Excel if Desired
- Customer Groups
 - If you have setup multiple Pratt & Whitney Customer IDs in VE (for example)
 - PW has one file that covers all those customers
 - The tool will use the standard customer



Customer Group	Customer ID	Name	Order ID	PO#	Part ID	Customer Part ID	Description	Desired Ship Date
GE	General Electronics	02689	95Q05089	123M123P01	SEAL, RING	04/19/2016		
GE	General Electronics	02689	95Q05089	123M123P01	SEAL, RING	04/25/2016		
GE	General Electronics	02689	95Q05089	123M123P01	SEAL, RING	06/15/2016		
GE	General Electronics	02689	95Q05089	123M123P01	SEAL, RING	06/24/2016		
GE	General Electronics	02689	95Q05089	123M123P01	SEAL, RING	07/27/2016		
GE	General Electronics	02689	95Q05089	123M123P01	SEAL, RING	09/26/2016		
GE	General Electronics	02689	95Q05089	123M123P01	SEAL, RING	10/26/2016		
GE	General Electronics	02689	95Q05089	123M123P01	SEAL, RING	11/11/2016		
GE	General Electronics	02689	95Q05089	123M123P01	SEAL, RING	11/23/2016		
GE	General Electronics	95G12250\GE\123M123P04	95G12250	123M123P04		09/08/2016		